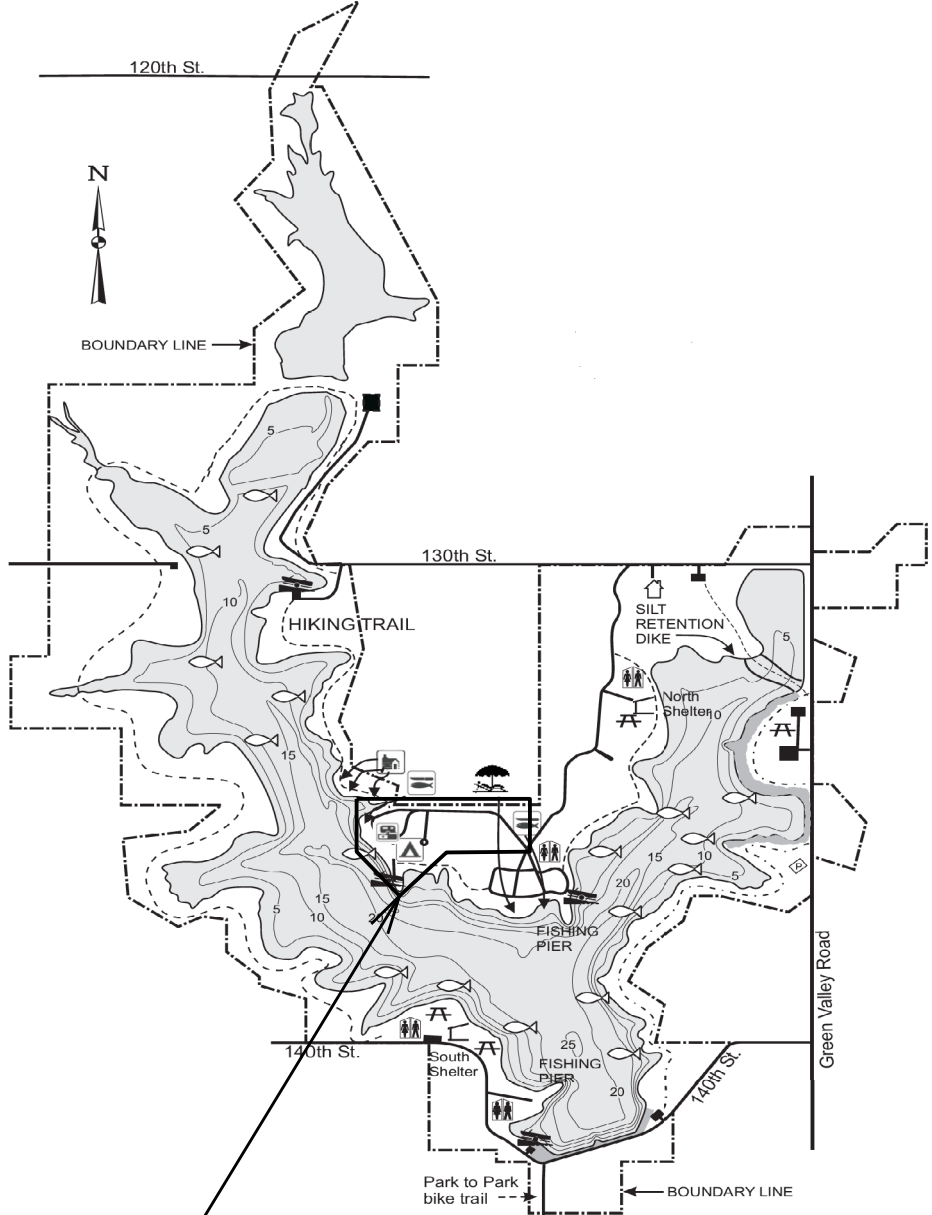
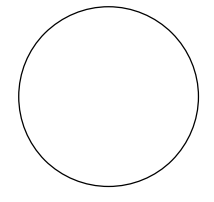


GREEN VALLEY STATE PARK



PROJECT LOCATION

CONSULTANT:



IOWA DEPARTMENT OF NATURAL RESOURCES
 ENGINEERING SERVICES - WALLACE BUILDING
 502 E. 9TH ST., DES MOINES, IA 50319-0034



PROJECT LOCATION MAP

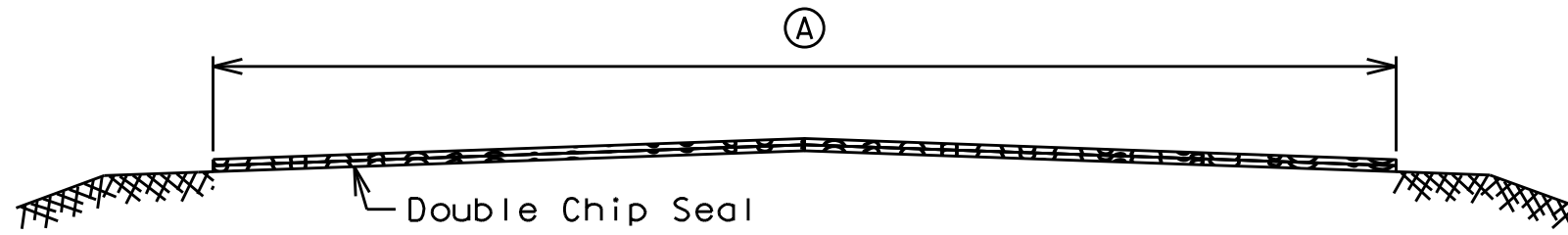
CAMPGROUND PAVEMENT MAINTENANCE REBID FOR:
GREEN VALLEY STATE PARK

UNION COUNTY

NO.	BY	REVISION

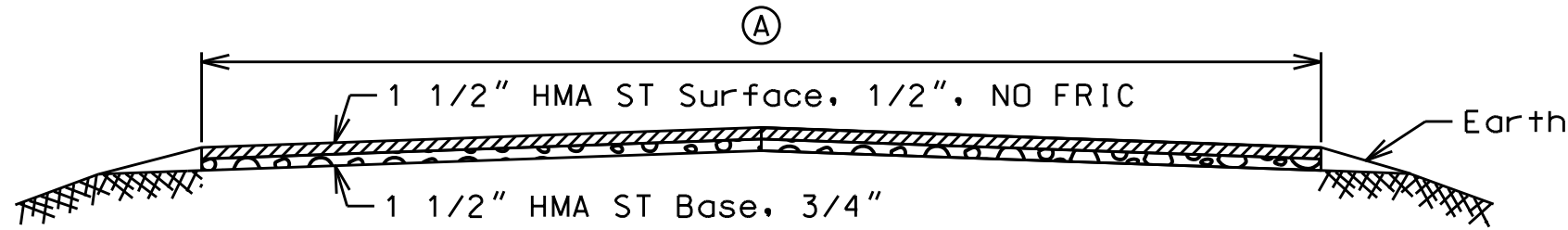
DRAWN BY: PROJECT NUMBER:
 21-04-88-04
 CHK'D BY: DATE:
 April 21, 2022

SHEET NO:
A.02



Ⓐ match existing lane width and slope

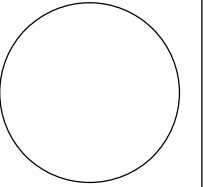
CABIN LANE
DOUBLE CHIP SEAL CROSS SECTION



Ⓐ match existing lane width and slope

CABIN LANE
HMA PAVEMENT CROSS SECTION

CONSULTANT:



IOWA DEPARTMENT OF
NATURAL RESOURCES

ENGINEERING SERVICES - WALLACE BUILDING
502 E. 9TH ST., DES MOINES, IA 50319-0034



GENERAL DETAILS

CAMPGROUND PAVEMENT MAINTENANCE REBID FOR:
GREEN VALLEY STATE PARK

UNION COUNTY

NO.	DATE	REVISION

DRAWN BY: PROJECT NUMBER:
21-04-88-04

CHK'D BY: DATE:
April 21, 2022

SHEET No:

B.01

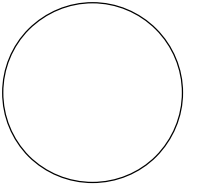
ESTIMATED PROJECT QUANTITIES			
ITEM NO.	ITEM	UNIT	TOTAL
1	Bituminous Fog Seal (HMA Pavement) (2306)	GAL	1,460
2	Patches, Full-Depth Finish, 5-inch, By Area, HMA (2529)	SY	107
3	Patches, Full-Depth Finish, 5-inch, By Count, HMA (2529)	EACH	8
4	Transverse Joint Repair (2543)	TON	200
5	Cleaning and Filling Cracks (HMA Surfaces) (2541)	MILES	1.2
6	Sealer Material (HMA Surfaces) (2541)	LBS	4,000
7	Modified Subbase (2115)	CY	18
8	Granular Shoulder, Type A (2121)	TON	70
9	Traffic Control	LS	1
10	Mobilization	LS	1
	Alternate #1		
11	Aggregate, Roadway Cover, 1/2" (2307)	TON	11
12	Binder Bitumen, CRS-2P (2307)	GAL	245
13	Mobilization	LS	1
	Alternate #2		
14	HMA ST Surface, 1/2", NO FRIC	TON	31
15	HMA ST Base, 3/4"	TON	31
16	Asphalt Binder, PG 58-28S	TON	3
17	Mobilization	LS	1

NOTES

No construction shall be allowed Friday - Sunday, May 20th - 31st, June 26th - July 5th or August 26 - September 10.

ESTIMATE REFERENCE INFORMATION	
ITEM NO.	DESCRIPTION
1	Bituminous Fog Seal (HMA Pavement) (2306) A. Dilute with water - 2 parts water, 1 part emulsion. Apply at 0.15 gal/sy
4	Transverse Joint Repair (2543) A. Nominal size of transverse joint repair will be 2' wide by 3 inches deep. Millings to be removed from the park or as directed by the Engineer.
7	Modified Subbase (2115) A. Contractor shall install 6" special backfill under all roadways, parking lots, and sidewalks. B. Preparation of subgrade shall be incidental.
8	Granular Shoulder, Type A (2121) A. Place from station 114+00-115+90 RT and 115+15-122+60 LT.

CONSULTANT:



IOWA DEPARTMENT OF NATURAL RESOURCES
ENGINEERING SERVICES - WALLACE BUILDING
502 E. 9TH ST., DES MOINES, IA 50319-0034



QUANTITIES AND GENERAL INFORMATION

CAMPGROUND PAVEMENT MAINTENANCE REBID FOR:
GREEN VALLEY STATE PARK
UNION COUNTY

NO.	BY	REVISION
DATE		

DRAWN BY: PROJECT NUMBER:
21-04-88-04

CHK'D BY: DATE:
April 21, 2022

SHEET NO:

C.01

GENERAL NOTES

Verify actual locations and elevations with DNR Engineer.

All work shall conform to and be performed in accordance with all applicable codes and ordinances.

The contractor shall visit the site and inspect the project area and thoroughly familiarize themselves with the actual job conditions prior to bidding and the start of work. Failure to visit the project site shall not relieve the contractor from performing the work in accordance to the plans, specification, special provisions and contract.

The contractor shall verify, at the site, all dimensions and conditions shown on the plans and shall notify the DNR Engineer of any discrepancies, omissions, and/or conflicts prior to proceeding with the work.

It shall be the contractor's responsibility to provide waste areas or disposal sites for excess material (excavated material or broken concrete) which is not desirable to be incorporated into the work involved on this project. No payment for overhaul will be allowed for material hauled to these sites. No material shall be placed within the right-of-way, unless specifically stated in the plans or approved by the DNR Engineer.

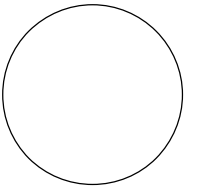
The contractor shall not disturb desirable grass areas and desirable trees outside the construction limits. The contractor will not be permitted to park or service vehicles and equipment or use these areas for storage of materials. Storage, parking and service areas will be subject to the approval of the DNR Engineer.

Where utilities and fixtures are shown as Existing on the plans or encountered within the construction area, it shall be the responsibility of the contractor to notify the DNR Engineer of those utilities prior to the beginning of any construction. The contractor shall be afforded access to these facilities for necessary modification of services. Underground facilities, structures and utilities have been plotted from available surveys and records and therefore their locations must be considered approximate only. It is possible there may be others, the existence of which is presently not known or shown. It is the contractor's responsibility to determine their existence and exact location and to avoid damage thereto. No claims for additional compensation will be allowed to the contractor for any interference or delay caused by such work.

The contractor shall shape graded area to maintain surface drainage. All elevations are to finish grade.

The contractor is expected to have materials, equipment, and labor available on a daily basis to install and maintain erosion control features on the project. This may involve seeding, silt fence, rock ditch checks, silt basins or silt dikes.

CONSULTANT:



**IOWA DEPARTMENT OF
NATURAL RESOURCES**

ENGINEERING SERVICES - WALLACE BUILDING
502 E. 9TH ST., DES MOINES, IA 50319-0034



GENERAL INFORMATION

CAMPGROUND PAVEMENT MAINTENANCE REBID FOR:
GREEN VALLEY STATE PARK

UNION COUNTY

NO.	BY	REVISION

DRAWN BY: PROJECT NUMBER:
21-04-88-04

CHK'D BY: DATE:
April 21, 2022

SHEET No:

C.02

PAVEMENT PRESERVATION

ROAD	LENGTH (FT)	WIDTH (FT)	AREA (SY)	TJ REPAIRS (COUNT)	TJ REPAIRS ASPHALT (TONS)	MILES	FOG SEAL (GALS)	COMMENTS
100+50 - 107+00	650	20	1444.5	--	--	0.12	217.0	
107+00 - 111+00	400	Varies*	1254.4	83**	136.5	0.08	188.2	*100 Stationing (Average Width for Transverse Joint Repair)= 27'; **Count for all 100 Stationing
111+00 - 113+40	240	16	426.7	--	--	0.05	64.1	
113+40 - 132+58	1918	12	2557.4	--	--	0.36	383.7	
200 Stationing	1081	11.5	1381.3	44	30.9	0.20	207.2	
300 Stationing	545	12	726.7	22	16.1	0.10	109.1	
400 Stationing	409	12	545.4	12	8.8	0.08	81.9	
500 Stationing	109	14	169.6	0	0.0	0.02	25.5	
600 Stationing	104	14	161.8	1	0.9	0.02	24.3	
700 Stationing	211	13	316.5	0	0.0	0.04	47.5	
800 Stationing	207	19***	437.0	6	7.0	0.04	65.6	***Average Width
900 Stationing	170	16	302.3	0	0.0	0.03	45.4	

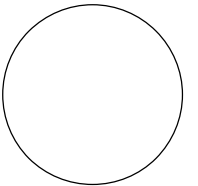
PATCHES

ROAD	LENGTH (FT)	WIDTH (FT)	CAMPSITES IMPACTED	COMMENTS
114+50	30	12	99, 100	
116+50	35	4	30	
118+80	30	4	27	
120+35	70	3	26	
123+15	5	6	55	
123+35	6	6	55	
126+25	5	6	11, 73	
127+15	5	6	9, 84	

DOUBLE CHIP SEAL

ROAD	LENGTH (FT)	WIDTH (FT)	AREA (SY)	COMMENTS
1100 Stationing	308	Varies	377	

CONSULTANT:



IOWA DEPARTMENT OF
NATURAL RESOURCES

ENGINEERING SERVICES - WALLACE BUILDING
502 E. 9TH ST., DES MOINES, IA 50319-0034



GENERAL DETAILS

CAMPGROUND PAVEMENT MAINTENANCE REBID FOR:

GREEN VALLEY STATE PARK

UNION COUNTY

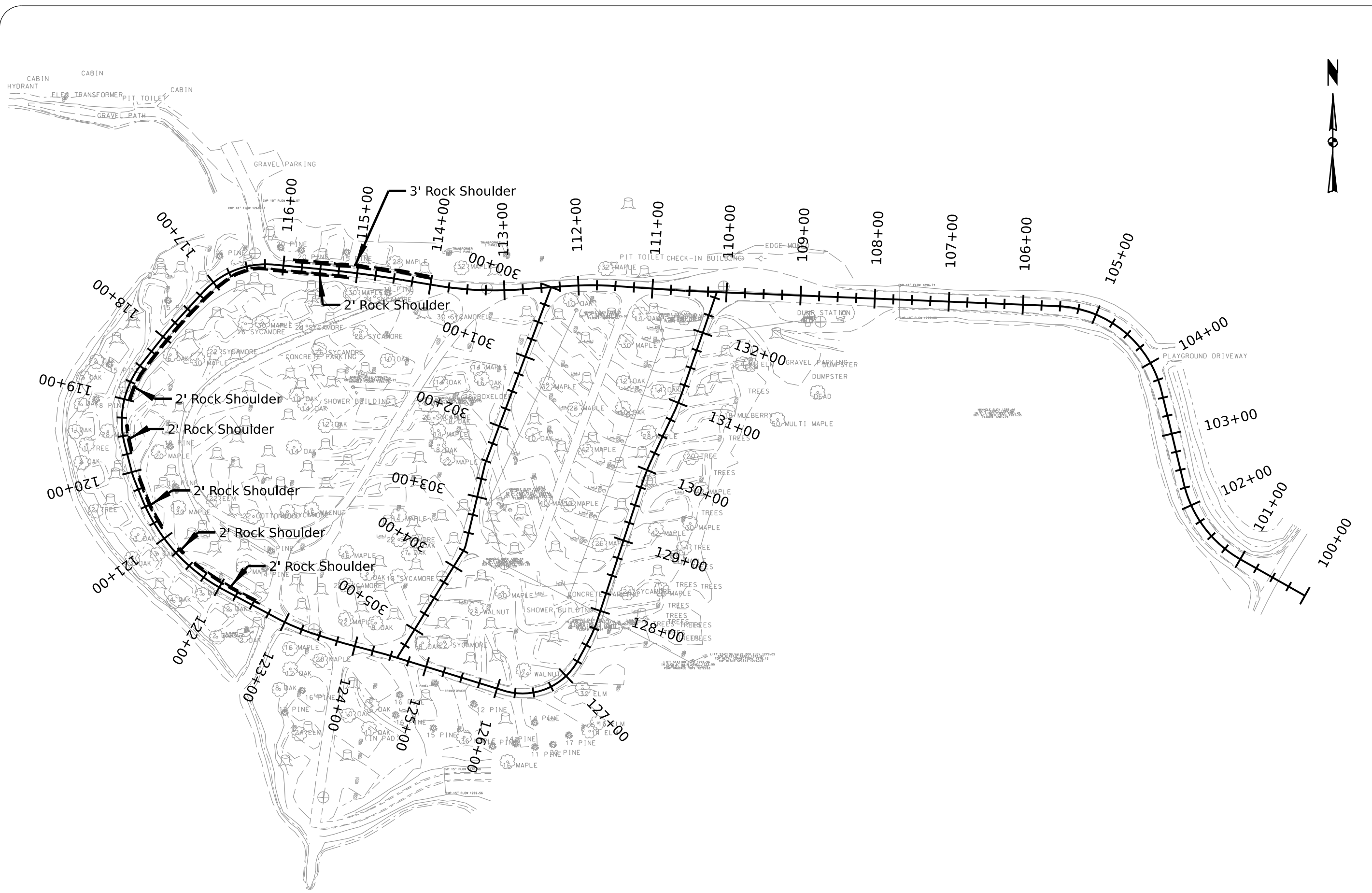
NO. BY DATE REVISION

DRAWN BY: PROJECT NUMBER:
21-04-88-04

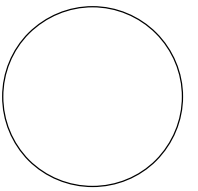
CHK'D BY: DATE:
April 21, 2022

SHEET No:

C.03



CONSULTANT:



**IOWA DEPARTMENT OF
NATURAL RESOURCES**

ENGINEERING SERVICES - WALLACE BUILDING
502 E. 9TH ST., DES MOINES, IA 50319-0034



SITE PLAN

CAMPGROUND PAVEMENT MAINTENANCE REBID FOR:

GREEN VALLEY STATE PARK

UNION COUNTY

NO.	BY	REVISION

DRAWN BY: PROJECT NUMBER:
21-04-88-04

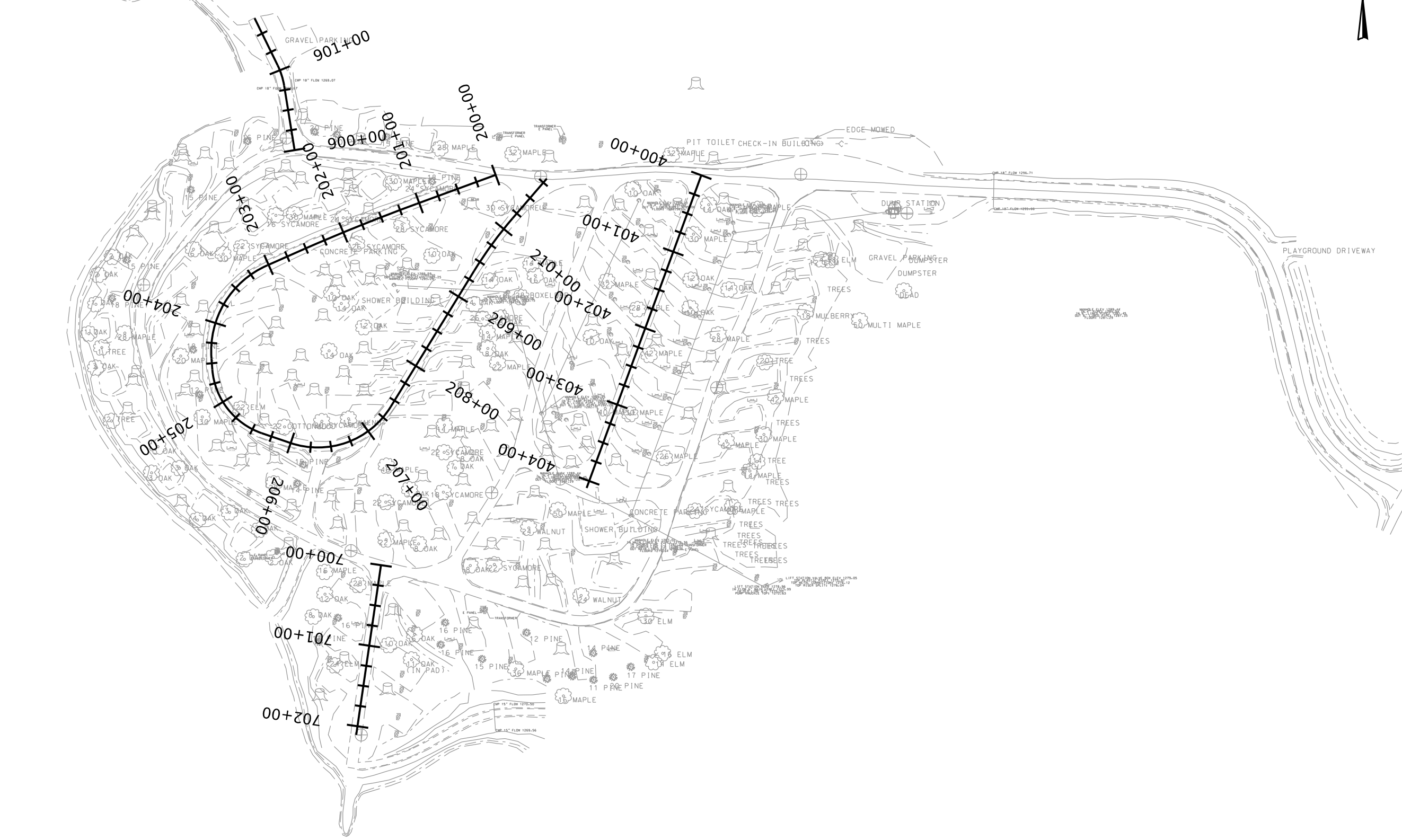
CHK'D BY: DATE:
April 21, 2022

SHEET No:

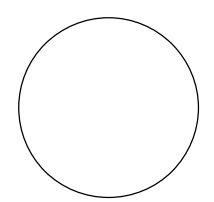
D.01

1"=125'

CABIN
HYDRANT
ELEM. TRANSFORMER
PIT TOILET
CABIN
GRAVEL PATH



CONSULTANT:



**IOWA DEPARTMENT OF
NATURAL RESOURCES**
ENGINEERING SERVICES - WALLACE BUILDING
502 E. 9TH ST., DES MOINES, IA 50319-0034



SITE PLAN

CAMPGROUND PAVEMENT MAINTENANCE REBID FOR:
GREEN VALLEY STATE PARK

UNION COUNTY

NO.	BY	REVISION

DRAWN BY: PROJECT NUMBER:
21-04-88-04
CHK'D BY: DATE:
April 21, 2022

SHEET No:
D.02

1"=125'

